

# SC90 Series



Designed for light-duty interior applications the Falcon SC90 closer ensures smooth, reliable operation, while meeting ADA accessibility requirements. The SC90 is backed by a ten-year warranty and is preset for easy installation.

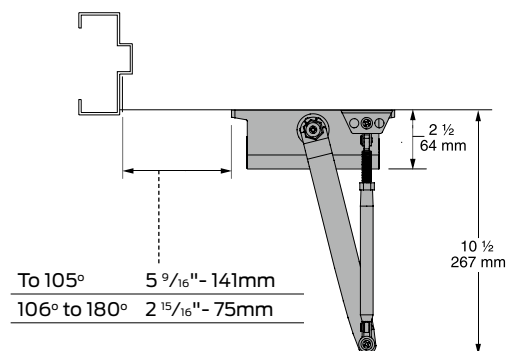
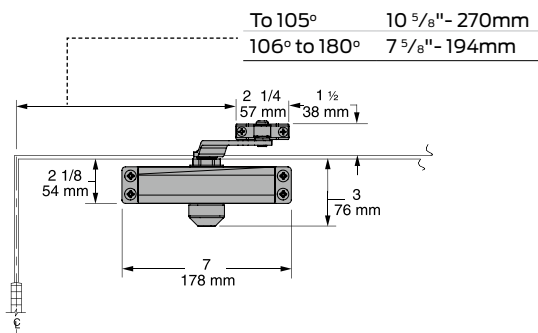
## Standard features

- Meets ANSI A117.1
- ANSI/BHMA A156.4, grade 3
- UL listed
- Closer mounts hinge side, top jamb or parallel arm
- when either the RW/PA or HW/PA arm is specified.
- Fixed sizes 1, 3 & 4
- Single piece cast aluminum body
- Non-handed for left or right swinging doors
- Adjustable backcheck
- Separate adjustable general speed and latch speed
- Heat-treated steel piston
- Heat-treated pinion
- • UL 10C approved fluid
- • Universal screw pack
- • 10-year warranty

## Listings and certifications

The Falcon SC90 Series is UL approved and compliant with the UL 10C and UBC 7-2 (1997) fire test. Additionally the SC90 Series is designed to meet the American Disabilities Act (ADA) and ANSI A117.1. The SC90 Series is ANSI/BHMA A156.4, Grade 3 certified.

## SC91 Hinge (pull side)

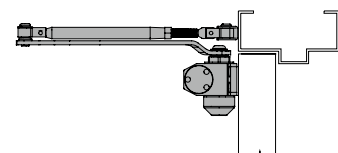


**Butt Hinges** should not exceed 5" (127mm) in width.

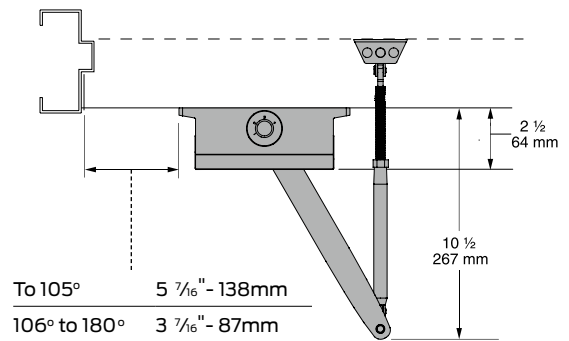
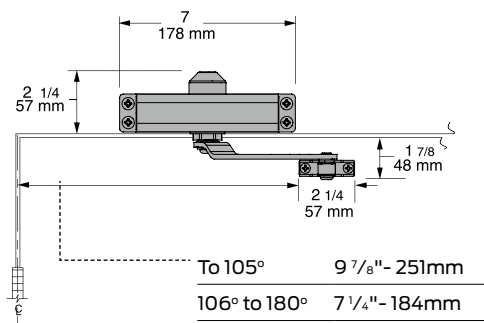
**Auxiliary Stop** is recommended at hold-open point or where a door cannot swing 180°.

**Reveal** should not exceed 3/4" (19mm) for regular arm or hold-open arm.

**Clearance** of 2 1/2" (64mm) behind door required for 90° installation.



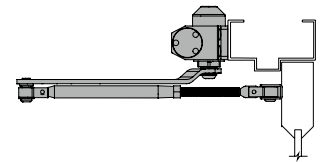
## SC91 Top jamb (push side)



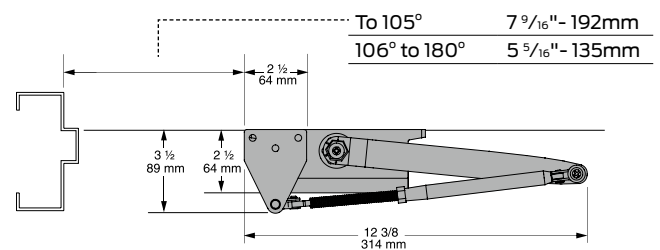
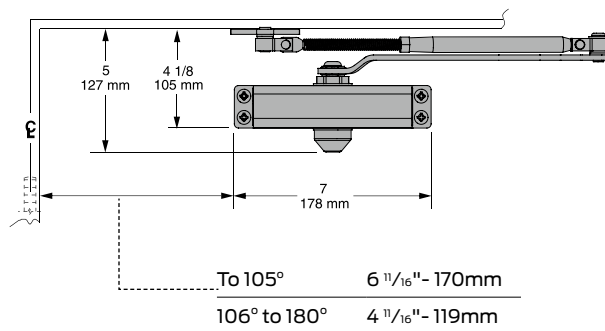
**Butt hinges** should not exceed 5" (127mm) in width.

**Auxiliary stop** is recommended at hold-open point or where a door cannot swing 180°.

**Reveal** should not exceed 3 1/4" (83mm) for regular arm or hold-open arm.

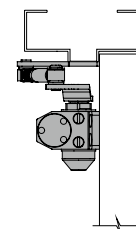


## SC91 Parallel (push side)

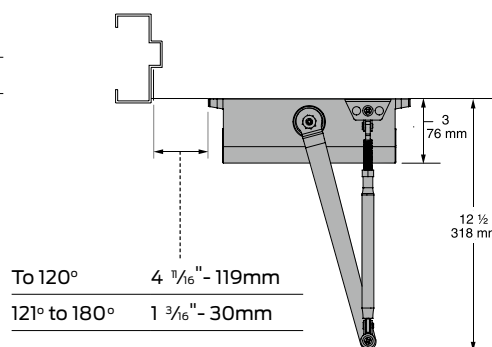
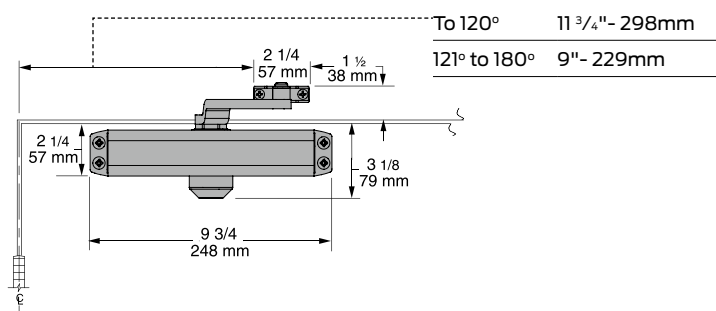


**Butt hinges** should not exceed 5" (127mm) in width.

**Auxiliary stop** is recommended at hold-open point or where a door cannot swing 180°.



## SC93/94 Hinge (pull side)



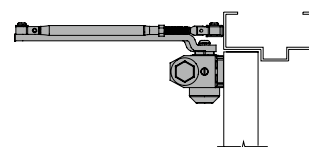
**Butt hinges** should not exceed 5" (127mm) in width.

**Auxiliary stop** is recommended at hold-open point or where a door cannot swing 180°.

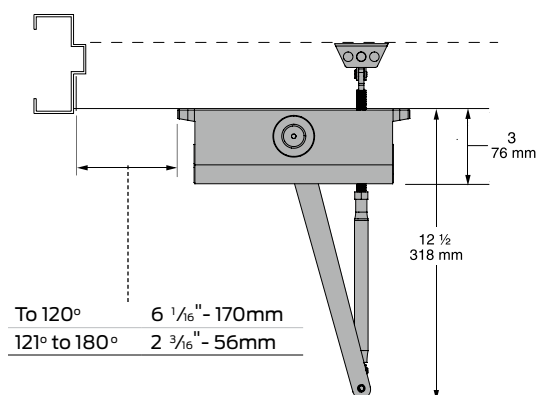
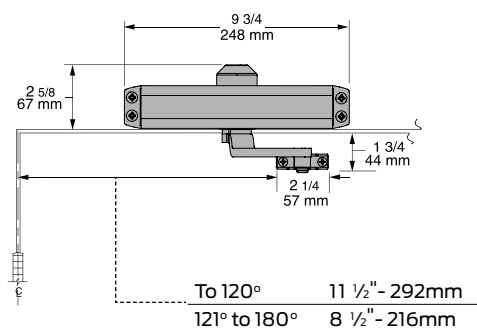
**Reveal** should not exceed 3/4" (19mm) for regular arm or hold-open arm.

**Clearance** of 3" (76mm) behind door required for 90° installation.

**Backcheck** closer with the backcheck option requires 105° mounting.



## SC93/94 Top jamb (push side)

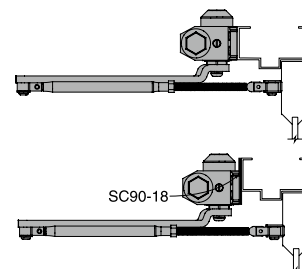


**Butt hinges** should not exceed 5" (127mm) in width.

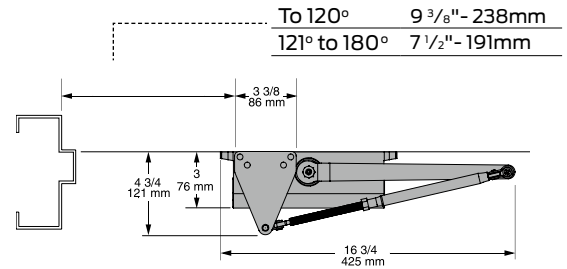
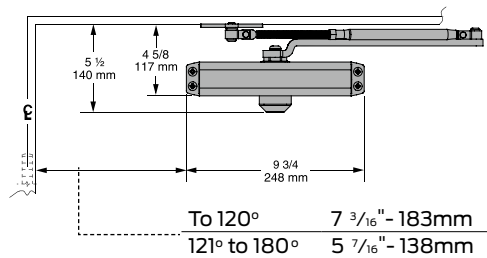
**Auxiliary stop** is recommended at hold-open point or where a door cannot swing 180°.

**Reveal** should not exceed 3 1/4" (83mm) for regular arm or hold-open arm.

**Backcheck** closer with the backcheck option requires 105° mounting.

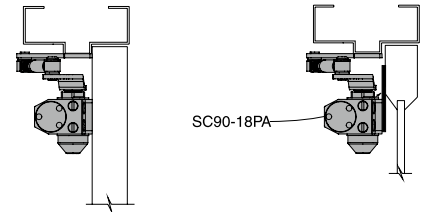


## SC93/94 Parallel (push side)

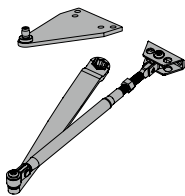


**Butt hinges** should not exceed 5" (127mm) in width.

**Auxiliary stop** is recommended at hold-open point or where a door cannot swing 180°. Backcheck closer with the backcheck option requires 105° mounting.

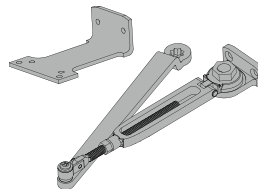


## Arm types All SC90 Series closers come with standard arm and screw pack.



### Regular arm, SC90-3077PA

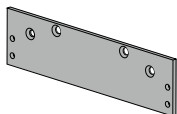
Non-handed arm with adjustable forearm assembly to accommodate a range of doors and frame reveal conditions. Mounts hinge side, top jamb or parallel arm. PA shoe included to allow installation in a parallel arm configuration.



### Hold-open arm, SC90-3049PA

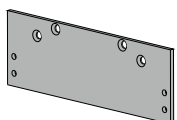
Optional, non-handed, hold open arm with adjustable forearm assembly to accommodate a range of doors and frame reveal conditions. Mounts hinge side, top jamb or parallel arm. PA shoe included to allow installation in a parallel arm configuration.

## Installation accessories



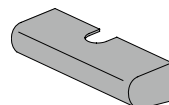
### Plate, SC90-18

Required for top jamb mounting where head frame is less than 1 3/4" (44mm) or flush ceiling conditions exists. Available only with SC93/94.



### Plate, SC90-18PA

Required for parallel arm mounting where top rail is less than 4 5/8" (117 mm), measured from the stop. Plate requires 2 1/8" (54mm) minimum top rail measured from stop. Available only with SC93/94.



### Cover, SC90-72

Optional non-handed, slim plastic cover. Available only with SC93/94.